



## MEETING MINUTES

### Helms Elementary School Construction Progress Meeting # 1

Date	Time	Purpose	Location
April 4, 2012	9:30am	Weekly Update	Helms ES, Conference Room
Prepared By – Tim Beally			
See Attached Attendee List			

#### 1) CMPA/Owner Issues

- a) Work Sequence
  - i) Work will be done in three pieces – pre-summer; summer; and post summer:
    - (1) Pre-Summer – outside work such as cleaning storm drains, pour ADA ramps, handrails, and pour concrete floor for Classroom 6
    - (2) Summer – majority of work including PA and FA systems, mechanical and electrical installations and restroom renovations.
    - (3) Post-Summer – work not completed during the summer and possibly whiteboards.
  - ii) AECOM requested HIG provide a description at the next meeting of the sequence of how work will progress through the school during the summer.
- b) Overtime – Open / Close
  - i) Mr. Brown from CFS attended to discuss work, work hours, and open / close needs.
  - ii) Most of the pre-summer work should be done when the school is normally open.
  - iii) Summer work will probably be twelve to sixteen hours per day. HISD will have to provide an open / close. This will be worked out later.
- c) Marquee Conduits
  - i) Before work begins to install the conduits for the electrical and fiber optic lines AECOM will have the marquee vendor, Atlas Signs, visit and coordinate with HIG.
- d) Unit Ventilators – AECOM asked when the UVs would be delivered. HIG will get info for next meeting.

#### 2) Architect

- a) FGC mentioned it is important HIG and their sub-contractors perform field measurements for submittals and installation.
- b) Outside air handling units can drain to the storm drain.

#### 3) Contractor

- a) HIG introduced Gary McMaster who they propose to be the project superintendent. The previous superintendent was reassigned within HIG to another project.
- b) AECOM asked HIG to send via email the resume of Mr. McMaster. Once received they will send it to CFS.
- c) Field office – appears HIG can use one of the T building classrooms for a project office. After the meeting HIG and AECOM walked the areas with the plant operator. HIG will be given the end classroom. They will move in some desks and place orange fence near the steps to prevent children from entering from the west T building stairs.
- d) HIG is concerned about material equipment left in the rooms during the summer. AEOCM said we will provide the principal information to properly move and or / store items.
- e) HIG asked about signage in the parking lot. AECOM explained the signage was meant as temporary parking signs for school personnel who may be displaced from their typical parking areas due to contractor's trailer and / or storage areas.

#### 4) HAZMAT

- a) HIG submitted the CCR to ERC. They were going to submit it HISD today.
- b) ERC said the hazmat sub-contractor had not responded to ERC's request for information about the length and time of hazmat activities. HIG was going to contact the sub-contractor.

- c) ERC wants to make sure the remediation sub-contractor understand and properly follow procedures when doing remediation work in and around the unit ventilators.

**5) Schedule**

- a) See attached schedule
- b) Next STAAR testing will occur April 24 through April 26 and also during May 7 through 18 although the specific test dates for this latter period are unclear.
- c) Work in Classroom 6
  - i) Tentatively planned to start mid-May (Per schedule) but HIG would like to start sooner, if possible, at the end of April. The work will take four to six weeks, including curing time.
  - ii) AECOM, in discussion with the plant operator after the meeting, requested the class room be vacated by the end of April.

**6) Change Proposals Request (CPRs) and Change Orders**

- a) See CPR log (attached). There are five pending changes.
- b) AECOM will maintain the CPR log. A copy will be attached to the meeting minutes.
- c) AECOM asked FGC to give info / direction to HIG soon so they may evaluate the changes.

**7) Submittals**

- a) The submittal log is attached.
- b) HIG has submitted twenty-one products. Last week four items had been submitted. They say the fire alarm, public address, electrical and plumbing submittals should come shortly and the marker board submittal should be provided next week.
- c) Discussion on specific items:
  - i) The mechanical sub-contractor (Lakewood Mechanical – LMI) was considering submitting outside air handling units not on the HISD approved standards list. AECOM said it is much better for all that the contractor submit and install HISD approved products rather than submit non approved products and try for approval. This will greatly slow down the project.
  - ii) AECOM asked HIG to provide a delivery date for the unit ventilators.

**8) Requests for Information (RFIs)**

- a) The RFI log is attached.
- b) HIG submitted two RFIs this week, both concerning restroom hardware.

**9) Record Drawing Review**

- a) FGC is revising the drawings to submit to COH for a revised permit. They expect to have the drawings resubmitted to the COH by the next meeting.

**10) Pay Applications**

- a) Draft schedule of values is attached. HIG did some minor reformatting from the previous version and made other small changes. They need to break out the MEP values.
- b) AECOM asked HIG to provide draft pay applications by the next to last meeting of the month. It will be reviewed by all. Then HIG can submit to FGC for review and then processing.

**11) Site Observations**

- a) In the previous meeting AECOM asked FGC to submit weekly reports and for HIG to submit their daily reports, once a month on a CD.

**Next Meeting – Thursday, April 11, 2012 at 9:30 AM**

These minutes were prepared to accurately report the discussions, issues and decisions made at the above referenced meeting. If any attendee does not agree with the statements made above, please provide corrections in writing within three (3) days of receipt; otherwise, it is deemed all meeting participants are in agreement with the contents.



**HOUSTON INDEPENDENT SCHOOL DISTRICT**  
Construction Services (Bond Program)  
3500 Tampa Street • Houston, Texas 77021-1244

**AECOM**

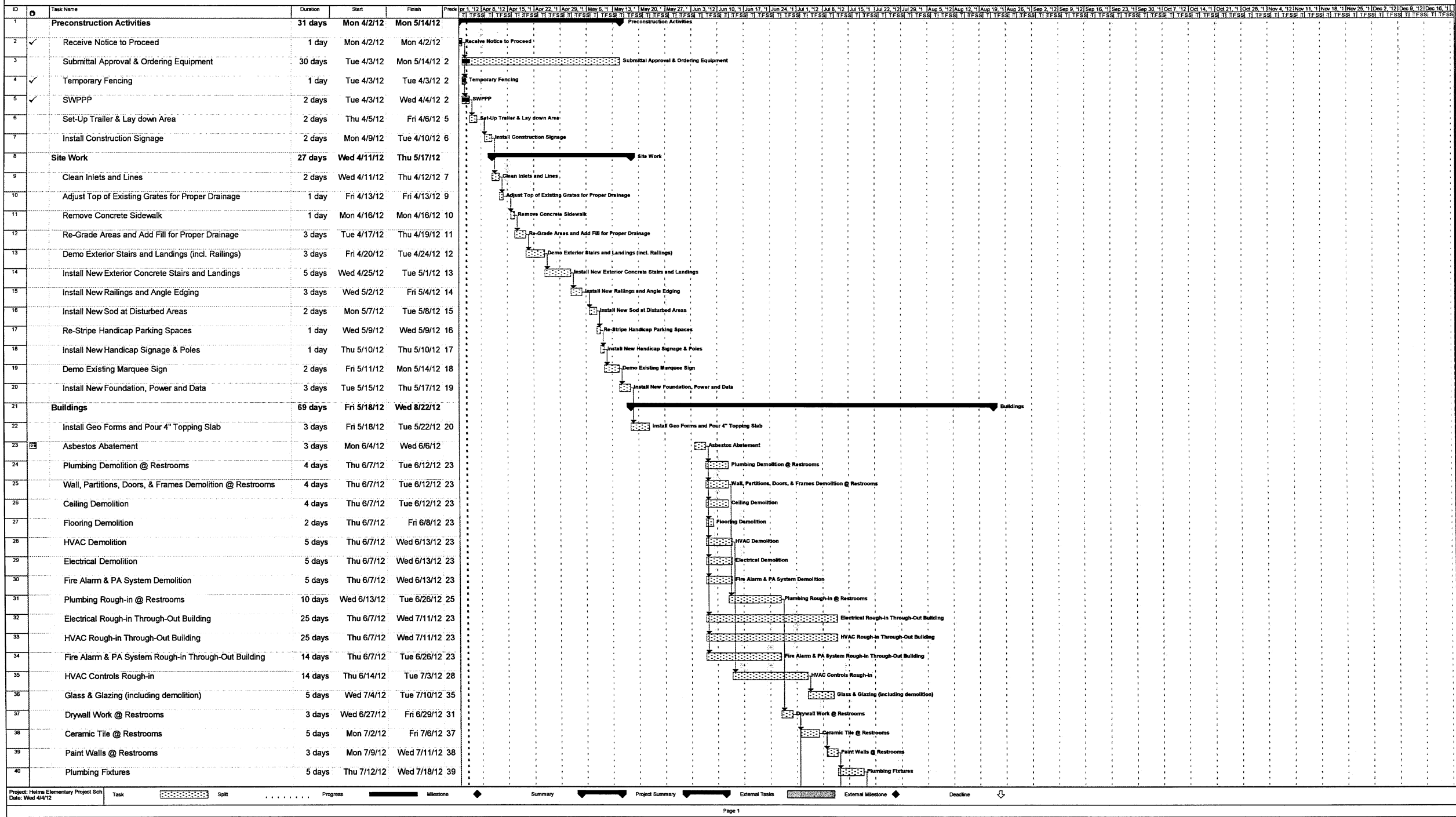
## SIGN-IN SHEET HISD BOND PROGRAM

Project: Helms Elementary School Renovation			Meeting Date / Time: April 4, 2012, 9:30 AM		
Meeting Purpose: Construction Meeting 1			Location: Helms ES		
Name	Initial	Title	Company	Phone	Email Address
Tim Beally	TMB	PM	AECOM	713-267-3223	Tim.beally@aecom.com
Diana Del Pilar		Principal	HISD – Helms ES	713-867-5130	ddelpila@houstonisd.org
Brian Cox	BMC	Principal	Fehr Grossman Cox	713.797.0404	bcox@fgca.cc
Ron Hughes	RH	Project Manager	Jones Engineers	713-222-7766	rhuhges@jonesengineers.com
Wes Geyer	WG	Project Manager	Horizon Intl. Group	832-347-7204	wgeyer@hgiusa.com
Russell McCown	RAM	Project Manager	Horizon Intl. Group	832-752-0066	rmccown@hgiusa.com
James Stanley		Superintendent	Horizon Intl. Group	281-960-2437	Field-super@hotmail.com
Gary McMaster	GM	Superintendent	Horizon Intl. Group	281-413-8112	gmcmaster@hgiusa.com
Bob Brown	RB	T.I.	H.I.S.D.	381-00-5771	BOBOWILL@HISD.org
Mike Asala	MA	P.M.	ERC	(713) 290-9444	marsh@ERC-Tx.com

## Helms ES Renovation - Change Log

[illegible]

Helms Elementary School



Helms Elementary School																								
ID	Task Name	Duration	Start	Finish	Predecessors	Jan 1 '12	Jan 8 '12	Jan 15 '12	Jan 22 '12	Jan 29 '12	Feb 5 '12	Feb 12 '12	Feb 19 '12	Feb 26 '12	Mar 5 '12	Mar 12 '12	Mar 19 '12	Mar 26 '12	Apr 2 '12	Apr 9 '12	Apr 16 '12	Apr 23 '12	Apr 30 '12	May 7 '12
41	Toilet Partitions	3 days	Thu 7/19/12	Mon 7/23/12	40																			
42	Toilet Accessories	3 days	Thu 7/19/12	Mon 7/23/12	40																			
43	VCT Floors	5 days	Mon 7/2/12	Fri 7/6/12	37																			
44	Acoustical Ceilings	7 days	Thu 7/19/12	Fri 7/27/12	40																			
45	Door and Hardware Installation	3 days	Thu 7/12/12	Mon 7/16/12	39																			
46	Install Room Signage	2 days	Tue 7/17/12	Wed 7/18/12	45																			
47	Millwork	3 days	Thu 7/19/12	Mon 7/23/12	46																			
48	Mini-Blinds	2 days	Tue 7/24/12	Wed 7/25/12	47																			
49	Marker & Tack Board Installation	5 days	Thu 7/26/12	Wed 8/1/12	48																			
50	MEP Trim-Out	5 days	Mon 7/30/12	Fri 8/3/12	44																			
51	Fire Alarm & PA System Trim-Out	5 days	Mon 7/30/12	Fri 8/3/12	44																			
52	HVAC Controls Trim-Out	5 days	Mon 7/30/12	Fri 8/3/12	44																			
53	Start-up & Test All Systems	3 days	Mon 8/6/12	Wed 8/8/12	52																			
54	Air Balancing	3 days	Thu 8/9/12	Mon 8/13/12	53																			
55	Final Inspections and Punch list	7 days	Tue 8/14/12	Wed 8/22/12	54																			
56	Close -Out	30 days	Thu 8/23/12	Wed 10/3/12																				
57	Close-Out Documents	30 days	Thu 8/23/12	Wed 10/3/12	55																			
58	Complete Punch list and Extras	30 days	Thu 8/23/12	Wed 10/3/12	55																			
59	Demobilize	30 days	Thu 8/23/12	Wed 10/3/12	55																			



Updated: 4/4/2012

[illegible]

# HORIZON INTERNATIONAL GROUP, LLC

## HISD HELMS ELEMENTARY SCHOOL RENOVATION

### SCHEDULE OF VALUES

Draft

A	B	C	D	E	F	G		H	I
ITEM NO.	DESCRIPTION OF WORK	SCHEDULED VALUE	WORK COMPLETED		Materials Presently Stored	Total Completed and Stored to Date	%	Balance To Complete	Retainage
			From Previous Applications	This Period					
1	DIV. 1 - GENERAL CONDITIONS								
2	OH&P	\$ 119,705	\$0.00		\$0.00	\$0.00	0.00%	\$119,705.00	\$0.00
3	Payment/Performance Bond	\$ 30,824	\$0.00		\$0.00	\$0.00	0.00%	\$30,824.00	\$0.00
4	Builders Risk	\$ 20,000	\$0.00		\$0.00	\$0.00	0.00%	\$20,000.00	\$0.00
5	Project Management	\$ 22,765	\$0.00		\$0.00	\$0.00	0.00%	\$22,765.00	\$0.00
6	Supervision	\$ 50,712	\$0.00		\$0.00	\$0.00	0.00%	\$50,712.00	\$0.00
7	Office Trailer	\$ 4,286	\$0.00		\$0.00	\$0.00	0.00%	\$4,286.00	\$0.00
8	Dumpsters	\$ 3,628	\$0.00		\$0.00	\$0.00	0.00%	\$3,628.00	\$0.00
9	Barricades	\$ 1,500	\$0.00		\$0.00	\$0.00	0.00%	\$1,500.00	\$0.00
10	Sanitary Facilities	\$ 857	\$0.00		\$0.00	\$0.00	0.00%	\$857.00	\$0.00
11	General Labor	\$ 10,500	\$0.00		\$0.00	\$0.00	0.00%	\$10,500.00	\$0.00
12	Equipment & Material Handling	\$ 2,000	\$0.00		\$0.00	\$0.00	0.00%	\$2,000.00	\$0.00
13	Travel	\$ 2,857	\$0.00		\$0.00	\$0.00	0.00%	\$2,857.00	\$0.00
14	Job Phone	\$ 1,714	\$0.00		\$0.00	\$0.00	0.00%	\$1,714.00	\$0.00
15	Job Utilities	\$ -	\$0.00		\$0.00	\$0.00	0.00%	\$0.00	\$0.00
16	Equipment Rental	\$ 3,628	\$0.00		\$0.00	\$0.00	0.00%	\$3,628.00	\$0.00
17	Job Sign	\$ -	\$0.00		\$0.00	\$0.00	0.00%	\$0.00	\$0.00
18	Temporary Fencing & Security	\$ 500	\$0.00		\$0.00	\$0.00	0.00%	\$500.00	\$0.00
19	Storage Container	\$ -	\$0.00		\$0.00	\$0.00	0.00%	\$0.00	\$0.00
20	General Clean-Up	\$ -	\$0.00		\$0.00	\$0.00	0.00%	\$0.00	\$0.00
21	Final Clean - Sub	\$ 6,710	\$0.00		\$0.00	\$0.00	0.00%	\$6,710.00	\$0.00
22	Punch Out	\$ -	\$0.00		\$0.00	\$0.00	0.00%	\$0.00	\$0.00
23	Close Out	\$ -	\$0.00		\$0.00	\$0.00	0.00%	\$0.00	\$0.00
24	Layout & Surveying	\$ -	\$0.00		\$0.00	\$0.00	0.00%	\$0.00	\$0.00
25	Office Admin	\$ 4,286	\$0.00		\$0.00	\$0.00	0.00%	\$4,286.00	\$0.00
26	SWPPP	\$ -	\$0.00		\$0.00	\$0.00	0.00%	\$0.00	\$0.00
27	Permits	\$ 4,488	\$0.00		\$0.00	\$0.00	0.00%	\$4,488.00	\$0.00
28	ALLOWANCES								
29	HISD Allowance	\$ 10,000	\$0.00		\$0.00	\$0.00	0.00%	\$10,000.00	\$0.00
30	DIV. 2 - Site Work								
31	Landscaping/Site work	\$ 10,167	\$0.00		\$0.00	\$0.00	0.00%	\$10,167.00	\$0.00
32	Asbestos Abatement	\$ 11,200	\$0.00		\$0.00	\$0.00	0.00%	\$11,200.00	\$0.00
33	Demolition	\$ 13,675	\$0.00		\$0.00	\$0.00	0.00%	\$13,675.00	\$0.00
34		\$ -	\$0.00		\$0.00	\$0.00	0.00%	\$0.00	\$0.00
35	Pavement Marking	\$ 2,160	\$0.00		\$0.00	\$0.00	0.00%	\$2,160.00	\$0.00
36	Fencing	\$ 6,200	\$0.00		\$0.00	\$0.00	0.00%	\$6,200.00	4 \$0.00
37	DIV. 3 - CONCRETE								




38	Cast-in-Place Concrete - Materials	\$	17,300	\$0.00	\$0.00	\$0.00	0.00%	\$17,300.00	\$0.00
39	Cast-in-Place Concrete - Labor			\$0.00	\$0.00	\$0.00	0.00%	\$0.00	\$0.00
40				\$0.00	\$0.00	\$0.00	0.00%	\$0.00	\$0.00
41	<b>DIV. 5 - STRUCTURAL</b>								
42	Pipe & Tube Railings - Mat	\$	25,450	\$0.00	\$0.00	\$0.00	0.00%	\$25,450.00	\$0.00
43	Pipe & Tube Railings - Lab			\$0.00	\$0.00	\$0.00	0.00%	\$0.00	\$0.00
44				\$0.00	\$0.00	\$0.00	0.00%	\$0.00	\$0.00
45	<b>DIV. 6 - WOODS AND PLASTICS</b>								
46	Rough Carpentry M	\$	6,500	\$0.00	\$0.00	\$0.00	0.00%	\$6,500.00	\$0.00
47	Rough Carpentry L	\$	-	\$0.00	\$0.00	\$0.00	0.00%	\$0.00	\$0.00
48	Millwork/Trim - M	\$	20,000	\$0.00	\$0.00	\$0.00	0.00%	\$20,000.00	\$0.00
49	Millwork/Trim - L	\$	-	\$0.00	\$0.00	\$0.00	0.00%	\$0.00	\$0.00
50				\$0.00	\$0.00	\$0.00	0.00%	\$0.00	\$0.00
51	<b>DIV. 7 - THERMAL &amp; MOISTURE</b>								
52	Joint Sealants - M	\$	26,500	\$0.00	\$0.00	\$0.00	0.00%	\$26,500.00	\$0.00
53	Joint Sealants - L	\$	-	\$0.00	\$0.00	\$0.00	0.00%	\$0.00	\$0.00
54				\$0.00	\$0.00	\$0.00	0.00%	\$0.00	\$0.00
55	<b>DIV. 8 - DOORS AND FRAMES</b>								
56	Material Handling	\$	893	\$0.00	\$0.00	\$0.00	0.00%	\$893.00	\$0.00
57	Steel Doors & Frames - M	\$	62,100	\$0.00	\$0.00	\$0.00	0.00%	\$62,100.00	\$0.00
58	Install Door - L	\$	4,500	\$0.00	\$0.00	\$0.00	0.00%	\$4,500.00	\$0.00
59	Window/Storefront - M	\$	6,299	\$0.00	\$0.00	\$0.00	0.00%	\$6,299.00	\$0.00
60	Window/Storefront - L	\$	-	\$0.00	\$0.00	\$0.00	0.00%	\$0.00	\$0.00
61	Hardware - M	\$	-	\$0.00	\$0.00	\$0.00	0.00%	\$0.00	\$0.00
62	Install Hardware - L	\$	4,525	\$0.00	\$0.00	\$0.00	0.00%	\$4,525.00	\$0.00
63				\$0.00	\$0.00	\$0.00	0.00%	\$0.00	\$0.00
64	<b>DIV. 9 - FINISHES</b>								
65	Portland Cement Plaster	\$	-	\$0.00	\$0.00	\$0.00	0.00%	\$0.00	\$0.00
66	Metal Stud Framing - M	\$	12,373	\$0.00	\$0.00	\$0.00	0.00%	\$12,373.00	\$0.00
67	Metal Stud Framing - L			\$0.00	\$0.00	\$0.00	0.00%	\$0.00	\$0.00
68	Drywall - M			\$0.00	\$0.00	\$0.00	0.00%	\$0.00	\$0.00
69	Drywall - L			\$0.00	\$0.00	\$0.00	0.00%	\$0.00	\$0.00
70	Ceramic Tile - Material	\$	20,283	\$0.00	\$0.00	\$0.00	0.00%	\$20,283.00	\$0.00
71	Ceramic Tile - Labor	\$	-	\$0.00	\$0.00	\$0.00	0.00%	\$0.00	\$0.00
72	Acoustical Ceilings - Material	\$	13,460	\$0.00	\$0.00	\$0.00	0.00%	\$13,460.00	\$0.00
73	Acoustical Ceilings - Labor	\$	-	\$0.00	\$0.00	\$0.00	0.00%	\$0.00	\$0.00
74	Painting - M	\$	20,000	\$0.00	\$0.00	\$0.00	0.00%	\$20,000.00	\$0.00
75	Painting - L	\$	-	\$0.00	\$0.00	\$0.00	0.00%	\$0.00	\$0.00
76	Resilient Flooring - M	\$	11,115	\$0.00	\$0.00	\$0.00	0.00%	\$11,115.00	\$0.00
77	Resilient Flooring - L	\$	-	\$0.00	\$0.00	\$0.00	0.00%	\$0.00	\$0.00
78	Rubber Base - M	\$	-	\$0.00	\$0.00	\$0.00	0.00%	\$0.00	\$0.00
79	Rubber Base - L	\$	-	\$0.00	\$0.00	\$0.00	0.00%	\$0.00	\$0.00
80	Floor Waxing	\$	554	\$0.00	\$0.00	\$0.00	0.00%	\$554.00	\$0.00
81				\$0.00	\$0.00	\$0.00	0.00%	\$0.00	\$0.00
82	<b>DIV. 10 - SPECIALTIES</b>								
83	Toilet Compartments - M	\$	21,625	\$0.00	\$0.00	\$0.00	0.00%	\$21,625.00	\$0.00
84	Toilet Compartments - L	\$	-	\$0.00	\$0.00	\$0.00	0.00%	\$0.00	\$0.00
85	Signage - M	\$	1,818	\$0.00	\$0.00	\$0.00	0.00%	\$1,818.00	4 \$0.00
86	Signage - L	\$	-	\$0.00	\$0.00	\$0.00	0.00%	\$0.00	\$0.00

87	Fire Extinguishers/Cabinets - M	\$ 1,450	\$0.00		\$0.00	\$0.00	0.00%	\$1,450.00	\$0.00
88	Fire Extinguishers/Cabinets - L	\$ -	\$0.00		\$0.00	\$0.00	0.00%	\$0.00	\$0.00
89	Toilet Accessories - M	\$ -	\$0.00		\$0.00	\$0.00	0.00%	\$0.00	\$0.00
90	Toilet Accessories - L	\$ -	\$0.00		\$0.00	\$0.00	0.00%	\$0.00	\$0.00
91	Marker/Tack Boards - M	\$ 12,929	\$0.00		\$0.00	\$0.00	0.00%	\$12,929.00	\$0.00
92	Marker/Tack Boards - L	\$ -	\$0.00		\$0.00	\$0.00	0.00%	\$0.00	\$0.00
93			\$0.00		\$0.00	\$0.00	0.00%	\$0.00	\$0.00
94	<b>DIV. 12 - FURNISHINGS</b>								
95	Horizontal Window Blinds - M	\$ 973	\$0.00		\$0.00	\$0.00	0.00%	\$973.00	\$0.00
96	Horizontal Window Blinds - L	\$ -	\$0.00		\$0.00	\$0.00	0.00%	\$0.00	\$0.00
97			\$0.00		\$0.00	\$0.00	0.00%	\$0.00	\$0.00
98	<b>DIV. 22 - Plumbing</b>								
99	Plumbing Rough In - M	\$ 63,800	\$0.00		\$0.00	\$0.00	0.00%	\$63,800.00	\$0.00
100	Plumbing Rough In - L		\$0.00		\$0.00	\$0.00	0.00%	\$0.00	\$0.00
101	Plumbing Insulation - M		\$0.00		\$0.00	\$0.00	0.00%	\$0.00	\$0.00
102	Plumbing Insulation - L		\$0.00		\$0.00	\$0.00	0.00%	\$0.00	\$0.00
103	Plumbing Fixtures - M		\$0.00		\$0.00	\$0.00	0.00%	\$0.00	\$0.00
104	Plumbing Fixtures - L		\$0.00		\$0.00	\$0.00	0.00%	\$0.00	\$0.00
105			\$0.00		\$0.00	\$0.00	0.00%	\$0.00	\$0.00
106	<b>DIV. 23 - HVAC</b>								
107	HVAC Piping - M	\$ 790,800	\$0.00		\$0.00	\$0.00	0.00%	\$790,800.00	\$0.00
108	HVAC Piping - L		\$0.00		\$0.00	\$0.00	0.00%	\$0.00	\$0.00
109	Ductwork - M		\$0.00		\$0.00	\$0.00	0.00%	\$0.00	\$0.00
110	Ductwork - L		\$0.00		\$0.00	\$0.00	0.00%	\$0.00	\$0.00
111	Insulation of HVAC Systems - M		\$0.00		\$0.00	\$0.00	0.00%	\$0.00	\$0.00
112	Insulation of HVAC Systems - L		\$0.00		\$0.00	\$0.00	0.00%	\$0.00	\$0.00
113	Outlets & Inlets - Mat.		\$0.00		\$0.00	\$0.00	0.00%	\$0.00	\$0.00
114	Outlets & Inlets - Labor		\$0.00		\$0.00	\$0.00	0.00%	\$0.00	\$0.00
115	Duct Accessories - M		\$0.00		\$0.00	\$0.00	0.00%	\$0.00	\$0.00
116	Duct Accessories - L		\$0.00		\$0.00	\$0.00	0.00%	\$0.00	\$0.00
117	Commissioning & Training		\$0.00		\$0.00	\$0.00	0.00%	\$0.00	\$0.00
118	Unit Ventilators - M		\$0.00		\$0.00	\$0.00	0.00%	\$0.00	\$0.00
119	Unit Ventilators - L		\$0.00		\$0.00	\$0.00	0.00%	\$0.00	\$0.00
120	Packaged Compressor & Condenser Units		\$0.00		\$0.00	\$0.00	0.00%	\$0.00	\$0.00
121	Packaged Compressor & Condenser Units		\$0.00		\$0.00	\$0.00	0.00%	\$0.00	\$0.00
122	Outdoor Air Handlers - M		\$0.00		\$0.00	\$0.00	0.00%	\$0.00	\$0.00
123	Outdoor Air Handlers - L		\$0.00		\$0.00	\$0.00	0.00%	\$0.00	\$0.00
124	O & M's		\$0.00		\$0.00	\$0.00	0.00%	\$0.00	\$0.00
125	Testing & Balancing	\$ 18,000	\$0.00		\$0.00	\$0.00	0.00%	\$18,000.00	\$0.00
126			\$0.00		\$0.00	\$0.00	0.00%	\$0.00	\$0.00
127	<b>DIV. 26 - ELECTRICAL</b>								
128	Mobilization	\$ 361,200	\$0.00		\$0.00	\$0.00	0.00%	\$361,200.00	\$0.00
129	Electrical Undergrounds - M		\$0.00		\$0.00	\$0.00	0.00%	\$0.00	\$0.00
130	Electrical Undergrounds - L		\$0.00		\$0.00	\$0.00	0.00%	\$0.00	\$0.00
131	Rough-In - M		\$0.00		\$0.00	\$0.00	0.00%	\$0.00	\$0.00
132	Rough-In - L		\$0.00		\$0.00	\$0.00	0.00%	\$0.00	\$0.00
133	Panels - Material		\$0.00		\$0.00	\$0.00	0.00%	\$0.00	\$0.00
134	Panels - Labor		\$0.00		\$0.00	\$0.00	0.00%	\$0.00	4 \$0.00
135	Lighting Fixture Package - Material		\$0.00		\$0.00	\$0.00	0.00%	\$0.00	\$0.00

136	Lighting Fixture Package - Labor		\$0.00		\$0.00	\$0.00	0.00%	\$0.00	\$0.00
137	Trim out - Materials		\$0.00		\$0.00	\$0.00	0.00%	\$0.00	\$0.00
138	Trim out - Labor		\$0.00		\$0.00	\$0.00	0.00%	\$0.00	\$0.00
139	Site work - Materials		\$0.00		\$0.00	\$0.00	0.00%	\$0.00	\$0.00
140	Site work - Labor		\$0.00		\$0.00	\$0.00	0.00%	\$0.00	\$0.00
141							0.00%		
142	<b>DIV. 27 - DSTRIBUTED COMMUNICATIONS</b>								
143	<b>AND MONITORING SYSTEM</b>								
144	PA System - M	\$ 51,193	\$0.00		\$0.00	\$0.00	0.00%	\$51,193.00	\$0.00
145	PA System - L	\$ -	\$0.00		\$0.00	\$0.00	0.00%	\$0.00	\$0.00
146							0.00%		
147	<b>DIV. 28 - Fire Alarm</b>								
148	Fire Alarm - M	\$ 49,998	\$0.00		\$0.00	\$0.00	0.00%	\$49,998.00	\$0.00
149	Fire Alarm - L	\$ -	\$0.00		\$0.00	\$0.00	0.00%	\$0.00	\$0.00
		<b>\$1,970,000.00</b>	<b>\$0.00</b>	<b>\$0.00</b>	<b>\$0.00</b>	<b>\$0.00</b>	<b>0%</b>	<b>\$1,970,000.00</b>	<b>\$0.00</b>

# Submittal Log and Schedule - Helms Elementary School



		Log of Required Submittals				Schedule		Submittal Distribution			Disposition of Submittal			<div> Horizon Group INTERNATIONAL</div>	
		Total Open Submittals													
		Total Submittals in HGI's Office													
Spec Section		Specification Subdivision	Status / Revision	Description	Subcontractor	Date HGI Requested	Date Due	Date Received	Date HGI Sent Out	Engineer / Architect	Date Returned to HGI	Date Returned to Subcontractor	Resubmittal Required		Notes
													Y	N	
Division 02 Site Work															
024119 Selective Demolition															
		1.6C		Schedule of Demolition Activities											
		1.6D		Inventory of Demolition Items											
		1.6E		Predemolition Photographs											
029200 Lawns and Grasses															
		1.4A		Product Data											
Division 03 Concrete															
033000 Cast-In-Place-Concrete															
		1.2A		Product Data	Elite										
		1.2C		Design Mixes	Elite	03/30/12	03/30/12	04/02/12	04/02/12	Arch.					
		1.2D		Reinforcement Shop Drawings	Elite	03/30/12	03/30/12	04/03/12	04/03/12	Arch.					
		1.2E		Expanded Polystyrene (EPS) Geofoam	Elite	04/03/12	04/03/12	04/03/12	04/03/12	Arch.					
Division 05 Metals															
055213 Pipe and Tube Railings															
		1.4A		Product Data	Gulf Coast										
		1.4B		Shop Drawings	Gulf Coast										
		1.5A		Paint Compatability	Gulf Coast										
Division 06 Wood and Plastics															
061053 Miscellaneous Rough Carpentry															
		1.4A		Product Data	Xtreme Const										
064023 Interior Architectural Woodwork															
		1.4A		Product Data	Xtreme Const										
		1.4C		Shop Drawings	Xtreme Const										
		1.4D		Samples	Xtreme Const										
		1.4E		Product Certificates	Xtreme Const										
Division 07 - Thermal And Moisture Protection															
079200 Joint Sealants															
		D.1		Product Data											
		D.2		Samples											
		D.4		Product Certificates											
Division 08 - Doors And Windows															
081113 Hollow Metal Doors and Frames															
		1.4A		Product Data	Xtreme Const										
		1.4B		Shop Drawings	Xtreme Const										
		1.4C		Samples	Xtreme Const										
082120 Solid Core Plastic Laminate Faced Doors															
		C.1		Product Data	Xtreme Const										

Submittal Log and Schedule - Helms Elementary School



Submittal Log and Schedule - Helms Elementary School														
Spec Section		Log of Required Submittals				Schedule		Submittal Distribution			Disposition of Submittal			
		Total Open Submittals												
		Total Submittals in HGT's Office												
Spec Section		Specification Subdivision	Status / Revision	Description	Subcontractor	Date HGT Requested	Date Due	Date Received	Date HGT Sent Out	Engineer / Architect	Date Returned to HGT	Date Returned to Subcontractor	Resubmittal Required	Notes
		C.2		Shop Drawings	Xtreme Const									
		C.3		Samples	Xtreme Const									
084113 Aluminum Storefront														
		D.1		Product Data	Mares Glass									
		D.2		Manufacturer Certification	Mares Glass									
		D.3		Shop Drawings	Mares Glass									
		D.4		Samples for Color Selection	Mares Glass									
		D.5		Samples for verification of Finishes	Mares Glass									
087100 Door Hardware														
		1.4A		Product Data	Xtreme Const									
		1.4B		Hardware Schedule	Xtreme Const									
		1.4C		Keying Information	?									
088000 Glazing														
		1.5A		Product Data	Mares Glass									
		1.5B		Samples of Glass	Mares Glass									
		1.5C		Samples of Gaskets	Mares Glass									
		1.5D		Manufacturer Certificate	Mares Glass									
		1.5F		Sealant Test Reports	Mares Glass									
Division 09 - Finishes														
092200 Portland Cement Plaster														
		1.3A		Product Data										
		1.3B		Shop Drawings										
		1.3C		Samples for Initial Selection										
		1.3D		Samples for Verification										
092210 Non-Structural Metal Framing														
		1.3A		Product Data	ABC Const.									
092900 Gypsum Board														
		1.3A		Product Data	ABC Const.									
		1.3B		Samples	ABC Const.									
093100 Ceramic Tile														
		1.5A		Product Data	Bus. Floor Sol,	03/30/12	03/30/12	04/02/12	04/02/12	Arch				
		1.5C		Samples for Initial Selection	Bus. Floor Sol,									
		1.5D		Samples for Verification	Bus. Floor Sol,									
095113 Acoustical Panel Ceilings														
		1.5A		Product Data	ABC Const.									
		1.5C		Samples	ABC Const.									
096516 Resilient Sheet Flooring														
		1.3A		Product Data	Bus. Floor Sol,	03/30/12	03/30/12	04/02/12	04/02/12	Arch				
		1.3C		Samples	Bus. Floor Sol,									
096519 Resilient Tile Flooring														
		1.3A		Product Data	Bus. Floor Sol,	03/30/12	03/30/12	04/02/12	04/02/12	Arch				
		1.3C		Samples	Bus. Floor Sol,									

## Submittal Log and Schedule - Helms Elementary School



		Log of Required Submittals				Schedule		Submittal Distribution			Disposition of Submittal			Horizon Group INTERNATIONAL
		Total Open Submittals												
		Total Submittals in HGI's Office												
Spec Section		Specification Subdivision	Status / Revision	Description	Subcontractor	Date HGI Requested	Date Due	Date Received	Date HGI Sent Out	Engineer / Architect	Date Returned to HGI	Date Returned to Subcontractor	Resubmittal Required	Notes
096520 Resilient Base and Accessories														
		1.3a		Product Data	Bus. Floor Sol,									
		1.3B		Samples	Bus. Floor Sol,									
099113 Exterior Painting														
		1.3A		Product Data										
		1.3B		Samples										
		1.3C		Product List										
99123 Interior Painting														
		1.3A		Product Data										
		1.3B		Samples										
		1.3C		Product List										
Division 10 Specialties														
101000 Marker boards and Tack boards														
		1.10		Product Data	Newline									
101550 Toilet Compartments														
		1.3 A		Product Data	PBJ Spec.	03/27/12	03/27/12	03/27/12	03/30/12	Arch				
		1.3B		Shop Drawings	PBJ Spec.	03/27/12	03/27/12	03/27/12	03/30/12	Arch				
		1.3C		Color Samples	PBJ Spec.	03/27/12	03/27/12	03/27/12	03/30/12	Arch				
102800 Toilet Accessories														
		1.2A		Product Data	PBJ Spec.	03/27/12	03/27/12	03/27/12	03/28/12	Arch				
104410 Interior Unframed Signs														
		1.3B		Product Data	Nova Graphics									
		1.3C		Shop Drawings	Nova Graphics									
		1.3D		Samples	Nova Graphics									
Division 12 - Furnishings														
122113 Horizontal Louver Blinds														
		1.3A		Product Data	Capitol Blind	03/30/12	04/04/12	04/04/12	04/04/12	Arch				
		1.3B		Shop Drawings	Capitol Blind	03/30/12	04/04/12	04/04/12	04/04/12	Arch				
		1.3C		Samples	Capitol Blind	03/30/12	04/04/12	04/04/12	04/04/12	Arch				
Division 22 - Plumbing														
22 02 00 Basic Materials														
		1.11		Product Data	Unique Plumb									
22 05 18 Escutcheons														
		1.3A		Product Data	Unique Plumb									
22 05 23 General Duty Valves for Plumbing Piping														
		1.4A		Product Data	Unique Plumb									
22 05 29 Hangers and Supports for Plumbing Piping and Equipment														
		1.5A		Product Data	Unique Plumb									
22 07 19 Plumbing Piping Insulation														
		1.3A		Product Data	Unique Plumb									

Submittal Log and Schedule - Helms Elementary School



		Log of Required Submittals				Schedule		Submittal Distribution			Disposition of Submittal				Notes
		Total Open Submittals													
		Total Submittals in HGI's Office													
Spec Section		Specification Subdivision	Status / Revision	Description	Subcontractor	Date HGI Requested	Date Due	Date Received	Date HGI Sent Out	Engineer / Architect	Date Returned to HGI	Date Returned to Subcontractor	Resubmittal Required		
		1.3D		Material Test Reports	Unique Plumb										
22 11 16 Domestic Water Piping															
		1.3A		Product Data	Unique Plumb										
22 11 19 Domestic Water Piping Specialties															
		1.4A		Product Data	Unique Plumb										
22 13 16 Sanitary Waste and Vent Piping															
		1.4A		Product Data	Unique Plumb										
22 33 00 Electric Domestic Water Heaters															
		1.3A		Product Data	Unique Plumb										
22 34 00 Fuel Fired Domestic Water Heaters															
		1.3A		Product Data	Unique Plumb										
22 40 00 Plumbing Fixtures															
		1.4A		Product Data	Unique Plumb										
22 47 0 Drinking Fountains and Water Coolers															
		1.4A		Product Data	Unique Plumb										
Division 23 - Mechanical															
23 05 18 Escutcheons for HVAC Piping															
		1.3A		Product Data	LMI										
23 05 19 Meters and Gauges for HVAC Piping															
		1.3A		Product Data	LMI										
23 05 23 General Duty Valves for HVAC Piping															
		1.4A		Product Data	LMI										
23 05 29 Hangers and Supports for HVAC Piping & Equipment															
		1.5A		Product Data	LMI										
23 05 53 Identification for HVAC Piping & Equipment															
		1.3A		Product Data	LMI										
		1.3B		Equipment Label Schedule	LMI										
23 05 93 Testing, Adjusting, and Balancing for HVAC															
		1.4A		Qualification Data	LMI										
		1.4B		Contract Documents Examination Report	LMI										
		1.4D		Certified TAB Reports	LMI										
		1.4F		Instrument Calibration Reports	LMI										
23 07 00 HVAC Insulation															
		1.3A		Product Data	LMI										
		1.3C		Material Test Reports	LMI										
23 07 19 HVAC Piping Insulation															
		1.1		Product Data	LMI										
23 09 00 Instrumentation and Control for HVAC															
		1.1A		Product Data	LMI										
		1.1B		Shop Drawings	LMI										
23 09 01 HVAC Lighting Control Integrated with BAS															
		1.1A		Product Data	LMI										

## Submittal Log and Schedule - Helms Elementary School



Spec Section		Log of Required Submittals			Subcontractor	Schedule		Submittal Distribution			Disposition of Submittal				Notes
		Total Open Submittals	Status / Revision	Description											
		Total Submittals in HGT's Office													
Spec Section		Specification Subdivision	Status / Revision	Description	Subcontractor	Date HGT Requested	Date Due	Date Received	Date HGT Sent Out	Engineer / Architect	Date Returned to HGT	Date Returned to Subcontractor	Resubmittal Required		
		1.1B		Shop Drawings	LMI										
23 21 13 Hydronic Piping															
		1.5A		Product Data	LMI										
		1.5B		Shop Drawings	LMI										
		1.5G		Water Analysis	LMI										
23 21 23 Hydronic Pumps															
		1.4A		Product Data	LMI										
23 31 13 Metal Ducts															
		1.4A	Approved	Product Data	LMI	03/14/12	03/21/12	03/21/12	03/22/12	Eng.	3/27/12	3/29/12	N		
		1.4B		Shop Drawings	LMI										
23 33 00 Air Duct Accessories															
		1.3A	Approved	Product Data	LMI	03/14/12	03/21/12	03/21/12	03/22/12	Eng.	3/27/12	3/29/12	N		
		1.3B		Shop Drawings	LMI										
23 34 23 Power Ventilators															
		1.4A		Product Data	LMI										
23 37 13 Diffusers, Registers, & Grilles															
		1.3A	Approved	Product Data	LMI	03/14/12	03/21/12	03/21/12	03/22/12	Eng.	3/27/12	3/29/12	N		
23 41 00 Particulate Air Filtration															
		1.3A		Product Data	LMI										
23 62 00 Packaged Compressor and Condenser Units															
		1.3A		Product Data	LMI										
		1.3B		Shop Drawings	LMI										
23 73 14 Modular Outdoor Central Station Air-Handling Units															
		1.3A		Product Data	LMI										
23 74 33 Packaged Outdoor Heating and Cooling Make-up Air Conditioners															
		1.4A	R&R	Product Data	LMI	03/14/12	03/29/12	03/30/12	03/30/12	Eng.	3/30/12	4/2/12	Y		
		1.4B		Shop Drawings	LMI										
23 82 19 Fan Coil Units															
		1.4A		Product Data	LMI	03/14/12	03/29/12	03/29/12	03/29/12	Eng.					
		1.4B		Shop Drawings	LMI	03/14/12	03/29/12	03/29/12	03/29/12	Eng.					
		1.4C		Color Samples	LMI										
23 82 23 Unit Ventilators															
		1.4A	Approved	Product Data	LMI	03/14/12	03/29/12	03/29/12	03/29/12	Eng.	3/30/12	3/30/12	N		
		1.4B		Shop Drawings	LMI	03/14/12	03/29/12	03/29/12	03/29/12	Eng.					
Division 26 Electrical															
260200 Basic Materials & Methods															
		1.07C		Shop Drawings	State Wide Elec										
		1.07D		Product Data	State Wide Elec										
260300 Electrical Demolition Work															
		3.01F		Salvage List	State Wide Elec										
260500 Common Work Results for Electrical															
		1.4A		Product Data - Sleeve Seals	State Wide Elec										



Submittal Log and Schedule - Helms Elementary School



		Log of Required Submittals				Schedule		Submittal Distribution			Disposition of Submittal				Notes
		Total Open Submittals													
		Total Submittals in HGI's Office													
Spec Section		Specification Subdivision	Status / Revision	Description	Subcontractor	Date HGI Requested	Date Due	Date Received	Date HGI Sent Out	Engineer / Architect	Date Returned to HGI	Date Returned to Subcontractor	Resubmittal Required		
26 05 63 Identification for Electrical Systems															
		1.2A		Product Data	State Wide Elec										
26 05 19 Low Voltage Electrical Power Conductors and Cables															
		1.4A		Product Data	State Wide Elec										
		1.4B		Qualification Data: for testing agency	State Wide Elec										
		1.4C		Field Quality -Control test reports	State Wide Elec										
26 05 26 Grounding & Bonding for Electrical Systems															
		1.3A		Product Data	State Wide Elec										
		1.3B		Qualification Data	State Wide Elec										
		1.3C		Field Quality Control test reports	State Wide Elec										
		1.3D		O&M Data - Close Outs	State Wide Elec										
26 05 29 Hangers & Supports for Electrical Systems															
		1.5A		Product Data	State Wide Elec										
26 05 33 Raceway & Boxes for Electrical Systems															
		1.4A		Product Data	State Wide Elec										
		1.4B		Shop Drawings	State Wide Elec										
26 09 24 Electrical Lighting Control Integrated with BAS															
		1.1E		Shop Drawings	State Wide Elec										
26 24 16 Panel boards															
		1.5A		Product Data	State Wide Elec										
		1.5B		Qualification Data	State Wide Elec										
		1.5C		Field Quality Control Reports	State Wide Elec										
		1.5D		Panel board Schedules	State Wide Elec										
		1.5E		O&M Data - Close Outs	State Wide Elec										
26 27 26 Wiring Devices															
		1.4A		Product Data	State Wide Elec										
		1.4B		Shop Drawings	State Wide Elec										
		1.4C		Samples	State Wide Elec										
		1.4D		Field Quality Control Reports	State Wide Elec										
		1.4E		O&M Data - Close Outs	State Wide Elec										
26 28 16 Enclosed Switches & Circuit Breakers															
		1.5A		Product Data	State Wide Elec										
		1.5B		Field Quality Control Reports	State Wide Elec										
		1.5C		Manufacturers Field Service Report	State Wide Elec										
		1.5D		O&M Manuals - Closeout	State Wide Elec										
26 29 23 Variable Frequency Motor Controllers - Installation															
		1.8A		Training Sign in Sheet	State Wide Elec										
26 51 00 Interior Lighting															
		1.3A		Product Data	State Wide Elec										
		1.3B		Installation Instructions	State Wide Elec										
		1.3C		Qualification Data	State Wide Elec										
		1.3D		Product Certificates	State Wide Elec										
		1.3E		Field Quality Control Reports	State Wide Elec										

Submittal Log and Schedule - Helms Elementary School



		Log of Required Submittals				Schedule		Submittal Distribution			Disposition of Submittal				Horizon Group INTERNATIONAL	
		Total Open Submittals														
		Total Submittals in HGI's Office														
Spec Section		Specification Subdivision	Status / Revision	Description	Subcontractor	Date HGI Requested	Date Due	Date Received	Date HGI Sent Out	Engineer / Architect	Date Returned to HGI	Date Returned to Subcontractor	Resubmittal Required	Notes		
		1.3F		O&M Manuals - Closeout	State Wide Elec											
26 56 00 Exterior Lighting																
		1.5A		Product Data	State Wide Elec											
		1.5B		Shop Drawings	State Wide Elec											
		1.5C		Samples	State Wide Elec											
		1.5D		Pole Support Component Certificates	State Wide Elec											
		1.5E		Qualification Data	State Wide Elec											
		1.5F		Field Quality Reports	State Wide Elec											
		1.5G		O&M Manuals - Closeout	State Wide Elec											
		1.5H		Warranty - Sample of special warranty	State Wide Elec											
Division 27 - Communications																
27 51 00 Intercom																
		1.1		Product Data - Shop Drawings	AFS											
Division 28 - Electronic Safety And Security																
28 31 11 Digital Addressable Fire Alarm System																
		1.4A		Product Data	AFS											
		1.4B		Shop Drawings	AFS											
		1.4C		Suppliers Qualifications	AFS											
		1.4D		Hourly Service Rate Schedule	AFS											
		1.4E		O&M Manuals - Close Out	AFS											
		1.4F		Warranty - Close Out	AFS											





